

# The Darent Federation of Schools

## Supporting Children with Medical Needs Policy



**Approved by:** Governing Body

**Date:** January 2024

**Last reviewed on:** January 2023

**Next review due by:** January 2025

## Contents

1. Aims.....	1
2. Legislation and statutory responsibilities.....	2
3. Roles and responsibilities .....	4
4. Equal opportunities .....	5
5. Being notified that a child has a medical condition.....	5
6. Individual healthcare plans.....	5
7. Managing medicines .....	6
8. Emergency procedures.....	5
9. Training.....	6
10. Record keeping.....	8
11. Liability and indemnity.....	8
12. Complaints .....	7
13. Monitoring arrangements .....	7
14. Links to other policies.....	7
Appendix 1: Being notified a child has a medical condition.....	8

---

### 1. Aims

Reference to the Federation throughout this policy refers to Sundridge & Brasted CE Primary School, Kemsing Primary School and all staff and pupils within these school communities. Reference to 'school' refers to whichever school is appropriate within the Federation.

This policy aims to ensure that:

- Pupils, staff and parents understand how our school will support pupils with medical conditions
- Pupils with medical conditions are properly supported to allow them to access the same education as other pupils, including school trips and sporting activities

The governing board will implement this policy by:

- Making sure sufficient staff are suitably trained
- Making staff aware of pupils' conditions, where appropriate
- Making sure there are cover arrangements to ensure someone is always available to support pupils with medical conditions
- Providing supply teachers with appropriate information about the policy and relevant pupils
- Developing and monitoring individual healthcare plans (IHPs)

**The named person with responsibility for implementing this policy is Tom Hardwick.**

## **2. Legislation and statutory responsibilities**

This policy meets the requirements under Section 100 of the Children and Families Act 2014, which places a duty on governing boards to make arrangements for supporting pupils at their school with medical conditions.

It is also based on the Department for Education (DfE)'s statutory guidance on supporting pupils with medical conditions at school.

## **3. Roles and responsibilities**

### **3.1 The governing board**

The governing board for the Federation has ultimate responsibility to make arrangements to support pupils with medical conditions. The governing board will ensure that sufficient staff have received suitable training and are competent before they are responsible for supporting children with medical conditions.

### **3.2 The Executive Headteacher**

The Executive Headteacher and Inclusion Lead will:

- Make sure all staff are aware of this policy and understand their role in its implementation
- Ensure that there is a sufficient number of trained staff available to implement this policy and deliver against all individual healthcare plans (IHPs), including in contingency and emergency situations
- Ensure that all staff who need to know are aware of a child's condition
- Take overall responsibility for the development of IHPs
- Make sure that school staff are appropriately insured and aware that they are insured to support pupils in this way
- Contact the school nursing service in the case of any pupil who has a medical condition that may require support at school, but who has not yet been brought to the attention of the school nurse
- Ensure that systems are in place for obtaining information about a child's medical needs and that this information is kept up to date

### **3.3 Staff**

Supporting pupils with medical conditions during school hours is not the sole responsibility of one person. Any member of staff may be asked to provide support to pupils with medical conditions, although they will not be required to do so. This includes the administration of medicines.

Those staff who take on the responsibility to support pupils with medical conditions will receive sufficient and suitable training, and will achieve the necessary level of competency before doing so.

Teachers will take into account the needs of pupils with medical conditions that they teach. All staff will know what to do and respond accordingly when they become aware that a pupil with a medical condition needs help.

### **3.4 Parents**

Parents will:

- Provide the school with sufficient and up-to-date information about their child's medical needs
- Be involved in the development and review of their child's IHP and may be involved in its drafting
- Carry out any action they have agreed to as part of the implementation of the IHP, e.g. provide medicines and equipment, and ensure they or another nominated adult are contactable at all times

### **3.5 Pupils**

Pupils with medical conditions will often be best placed to provide information about how their condition affects them. Pupils should be fully involved in discussions about their medical support needs and contribute as much as possible to the development of their IHPs. They are also expected to comply with their IHPs.

### **3.6 School nurses and other healthcare professionals**

The school nursing service will notify the school when a pupil has been identified as having a medical condition that will require support in school. This will be before the pupil starts school, wherever possible. They may also support staff to implement a child's IHP.

Healthcare professionals, such as GPs and paediatricians, will liaise with the school's nurses and notify them of any pupils identified as having a medical condition. They may also provide advice on developing IHPs.

## **4. Equal opportunities**

Our Federation is clear about the need to actively support pupils with medical conditions to participate in school trips and visits, or in sporting activities, and not prevent them from doing so.

The school will consider what reasonable adjustments need to be made to enable these pupils to participate fully and safely on school trips, visits and sporting activities.

Risk assessments will be carried out so that planning arrangements take account of any steps needed to ensure that pupils with medical conditions are included. In doing so, pupils, their parents and any relevant healthcare professionals will be consulted.

## **5. Being notified that a child has a medical condition**

When the school is notified that a pupil has a medical condition, the process outlined below will be followed to decide whether the pupil requires an IHP.

The school will make every effort to ensure that arrangements are put into place within 2 weeks, or by the beginning of the relevant term for pupils who are new to our school.

See Appendix 1.

## **6. Individual healthcare plans (IHPs)**

The Executive Headteacher has overall responsibility for the development of IHPs for pupils with medical conditions.

Plans will be reviewed at least annually, or earlier if there is evidence that the pupil's needs have changed.

Plans will be developed with the pupil's best interests in mind and will set out:

- What needs to be done
- When
- By whom

Not all pupils with a medical condition will require an IHP. It will be agreed with a healthcare professional and the parents when an IHP would be inappropriate or disproportionate. This will be based on evidence. If there is no consensus, the headteacher will make the final decision.

Plans will be drawn up in partnership with the school, parents and a relevant healthcare professional, such as the school nurse, specialist or paediatrician, who can best advise on the pupil's specific needs. The pupil will be involved wherever appropriate.

IHPs will be linked to, or become part of, any education, health and care (EHC) plan. If a pupil has SEN but does not have an EHC plan, the SEN will be mentioned in the IHP.

The level of detail in the plan will depend on the complexity of the child's condition and how much support is needed. The governing board and the Executive Headteacher will consider the following when deciding what information to record on IHPs:

## Supporting Children with Medical Needs Policy

- The medical condition, its triggers, signs, symptoms and treatments
- The pupil's resulting needs, including medication (dose, side effects and storage) and other treatments, time, facilities, equipment, testing, access to food and drink where this is used to manage their condition, dietary requirements and environmental issues, e.g. crowded corridors, travel time between lessons
- Specific support for the pupil's educational, social and emotional needs. For example, how absences will be managed, requirements for extra time to complete exams, use of rest periods or additional support in catching up with lessons, counselling sessions
- The level of support needed, including in emergencies. If a pupil is self-managing their medication, this will be clearly stated with appropriate arrangements for monitoring
- Who will provide this support, their training needs, expectations of their role and confirmation of proficiency to provide support for the pupil's medical condition from a healthcare professional, and cover arrangements for when they are unavailable
- Who in the school needs to be aware of the pupil's condition and the support required
- Arrangements for written permission from parents and the headteacher for medication to be administered by a member of staff, or self-administered by the pupil during school hours
- Separate arrangements or procedures required for school trips or other school activities outside of the normal school timetable that will ensure the pupil can participate, e.g. risk assessments
- Where confidentiality issues are raised by the parent/pupil, the designated individuals to be entrusted with information about the pupil's condition
- What to do in an emergency, including who to contact, and contingency arrangements.

### **7. Managing medicines – see templates at the end of the policy**

#### **Prescription medicines will only be administered at school:**

- When it would be detrimental to the pupil's health or school attendance not to do so **and**
- Where we have parents' written consent

**The only exception to this is where the medicine has been prescribed to the pupil without the knowledge of the parents.**

Pupils under 16 will not be given medicine containing aspirin unless prescribed by a doctor.

Anyone giving a pupil any medication (for example, for pain relief) will first check maximum dosages and when the previous dosage was taken. Parents will always be informed.

The school will only accept prescribed medicines that are:

- In-date
- Labelled
- Provided in the original container, as dispensed by the pharmacist, and include instructions for administration, dosage and storage

The school will accept insulin that is inside an insulin pen or pump rather than its original container, but it must be in date.

All medicines will be stored safely. Pupils will be informed about where their medicines are at all times and be able to access them immediately. Medicines and devices such as asthma inhalers, blood glucose testing meters and adrenaline pens will always be readily available to pupils and not locked away.

Medicines will be returned to parents to arrange for safe disposal when no longer required.

#### **Non-prescription medicines will only be administered at Sundridge & Brasted Primary School:**

- When it would be detrimental to the pupil's health or school attendance not to do so **and**
- Where we have parents' written consent

### **7.1 Controlled drugs**

Controlled drugs are prescription medicines that are controlled under the Misuse of Drugs Regulations 2001 and subsequent amendments, such as morphine or methadone.

A pupil who has been prescribed a controlled drug may have it in their possession if they are competent to do so, but they must not pass it to another pupil to use. All other controlled drugs are kept in a secure cupboard in the school office and only named staff have access.

Controlled drugs will be easily accessible in an emergency and a record of any doses used and the amount held will be kept.

### **7.2 Pupils managing their own needs**

Pupils who are competent will be encouraged to take responsibility for managing their own medicines and procedures. This will be discussed with parents and it will be reflected in their IHPs.

Pupils will be allowed to carry their own medicines and relevant devices wherever possible. Staff will not force a pupil to take a medicine or carry out a necessary procedure if they refuse, but will follow the procedure agreed in the IHP and inform parents so that an alternative option can be considered, if necessary.

### **7.3 Unacceptable practice**

School staff should use their discretion and judge each case individually with reference to the pupil's IHP, but it is generally not acceptable to:

- Prevent pupils from easily accessing their inhalers and medication, and administering their medication when and where necessary
- Assume that every pupil with the same condition requires the same treatment
- Ignore the views of the pupil or their parents
- Ignore medical evidence or opinion (although this may be challenged)
- Send children with medical conditions home frequently for reasons associated with their medical condition or prevent them from staying for normal school activities, including lunch, unless this is specified in their IHPs
- If the pupil becomes ill, send them to the school office or medical room unaccompanied or with someone unsuitable
- Penalise pupils for their attendance record if their absences are related to their medical condition, e.g. hospital appointments
- Prevent pupils from drinking, eating or taking toilet or other breaks whenever they need to in order to manage their medical condition effectively
- Require parents, or otherwise make them feel obliged, to attend school to administer medication or provide medical support to their pupil, including with toileting issues. No parent should have to give up working because the school is failing to support their child's medical needs
- Prevent pupils from participating, or create unnecessary barriers to pupils participating in any aspect of school life, including school trips, e.g. by requiring parents to accompany their child
- Administer, or ask pupils to administer, medicine in school toilets

## **8. Emergency procedures**

Staff will follow the school's normal emergency procedures (for example, calling 999). All pupils' IHPs will clearly set out what constitutes an emergency and will explain what to do.

If a pupil needs to be taken to hospital, staff will stay with the pupil until the parent arrives, or accompany the pupil to hospital by ambulance.

## 9. Training

Staff who are responsible for supporting pupils with medical needs will receive suitable and sufficient training to do so.

The training will be identified during the development or review of IHPs. Staff who provide support to pupils with medical conditions will be included in meetings where this is discussed.

The relevant healthcare professionals will lead on identifying the type and level of training required and will agree this with the Executive headteacher. Training will be kept up to date.

Training will:

- Be sufficient to ensure that staff are competent and have confidence in their ability to support the pupils
- Fulfil the requirements in the IHPs
- Help staff to have an understanding of the specific medical conditions they are being asked to deal with, their implications and preventative measures
- The following staff have received training:

<b>Sundridge &amp; Brasted</b>	
<b>Name</b>	<b>Qualification</b>
Sophie Moorey-Brown	Paediatric First Aid
Lou Scott	Paediatric First Aid
Kayleigh Gallagher	Paediatric First Aid
Mathew Moorey-Brown	One Day Paediatric First Aid in a Primary School
Lauren Evans	One Day Paediatric First Aid in a Primary School
Helen Prestage	Workplace First Aid
Helen Prestage	Epipen Training and Administration of Buccolam Training
Lou Scott	Epipen Training and Administration of Buccolam Training
Lauren Evans	Epipen Training and Administration of Buccolam Training
Sophie Moorey-Brown	Epipen Training and Administration of Buccolam Training
Mathew Moorey-Brown	Epipen Training and Administration of Buccolam Training
Amber Menawy	Epipen Training and Administration of Buccolam Training

<b>Kemsing</b>	
<b>Name</b>	<b>Qualification</b>
Laura Dazell	Paediatric First Aid
Diane Gawley	Paediatric First Aid
Sarah Smith	Paediatric First Aid
Lauren Norris	Paediatric First Aid
Lee Adams	Emergency First Aid at Work
Jacky Falcon-Uff	Diabetic Management Training
Oksana Zuyeva	Diabetic Management Training
Eduan du Toit	Diabetic Management Training
Amanda Arnold	Diabetic Management Training
Sarah Smith	Diabetic Management Training
Jayne Romero	Diabetic Management Training
Diane Gawley	Diabetic Management Training
Moira Wilson	Diabetic Management Training

Healthcare professionals will provide confirmation of the proficiency of staff in a medical procedure, or in providing medication.

All staff will receive training so that they are aware of this policy and understand their role in implementing it, for example, with preventative and emergency measures so they can recognise and act quickly when a problem occurs. This will be provided for new staff during their induction.

## **10. Record keeping**

The governing board will ensure that written records are kept of all medicine administered to pupils for as long as these pupils are at the school. Parents will be informed if their pupil has been unwell at school.

IHPs are kept in a readily accessible place which all staff are aware of.

## **11. Liability and indemnity**

The governing board will ensure that the appropriate level of insurance is in place and appropriately reflects the school's level of risk.

The school is insured via Kent County Council's Safehands Insurance Scheme. A Medical Malpractice policy is included as part of this scheme and provides cover for losses incurred in relation to medical procedures undertaken by school staff.

## **12. Complaints**

Parents with a complaint about the school's actions in regard to their child's medical condition should discuss these directly with the Executive Headteacher in the first instance. If the Executive Headteacher cannot resolve the matter, they will direct parents to the school's complaints procedure.

## **13. Monitoring arrangements**

This policy will be reviewed and approved by the governing board every year.

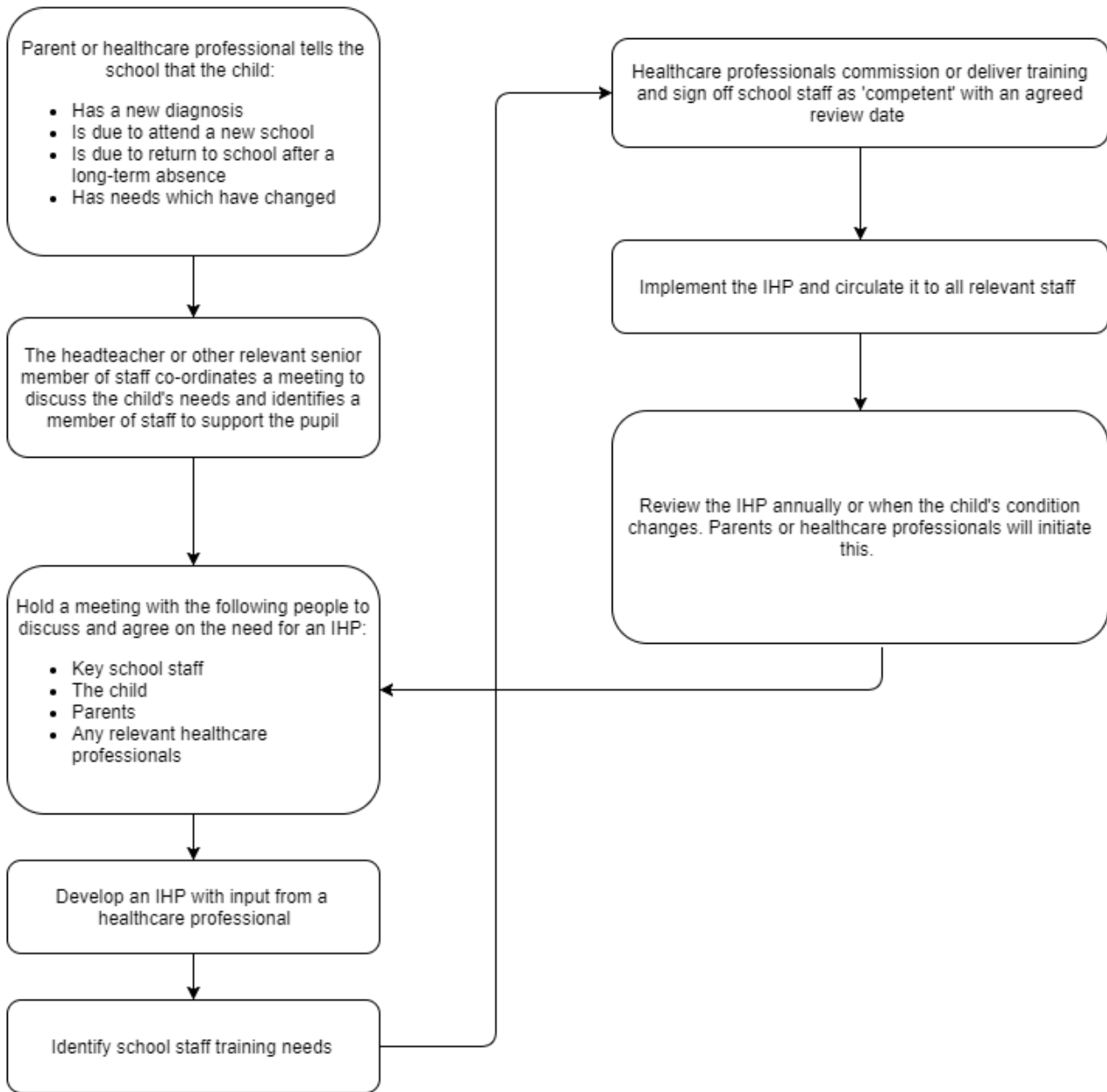
## **14. Links to other policies**

This policy links to the following policies:

- Accessibility plan
- Complaints
- Equality information and objectives
- First aid
- Health and safety
- Safeguarding
- Special educational needs information report and policy



Appendix 1: Being notified a child has a medical condition



Supporting Children with Medical Needs Policy

**Template A: individual healthcare plan**

Setting

Child's name

Group/class/form

Date of birth

Child's address

Medical diagnosis or condition

Date

Review date


**Family Contact Information**

Name

Phone no. (work)

(home)

(mobile)

Name

Relationship to child

Phone no. (work)

(home)

(mobile)


**Clinic/Hospital Contact**

Name

Phone no.


**G.P.**

Name

Phone no.


Supporting Children with Medical Needs Policy

**Template A: individual healthcare plan**

Setting

Child's name

Group/class/form

Date of birth

Child's address

Medical diagnosis or condition

Date

Review date


**Family Contact Information**

Name

Phone no. (work)

(home)

(mobile)

Name

Relationship to child

Phone no. (work)

(home)

(mobile)


**Clinic/Hospital Contact**

Name

Phone no.


**G.P.**

Name

Phone no.


Who is responsible for providing support in

--

## Supporting Children with Medical Needs Policy

school

## Supporting Children with Medical Needs Policy

Describe medical needs and give details of child's symptoms, triggers, signs, treatments, facilities, equipment or devices, environmental issues etc

Name of medication, dose, method of administration, when to be taken, side effects, contra-indications, administered by/self-administered with/without supervision

Daily care requirements

Specific support for the pupil's educational, social and emotional needs

Arrangements for school visits/trips etc

Other information

Describe what constitutes an emergency, and the action to take if this occurs

Who is responsible in an emergency (*state if different for off-site activities*)?

Plan developed with

Supporting Children with Medical Needs Policy

Staff training needed/undertaken – who, what, when

Form copied to

**Template B: parental agreement for setting to administer prescribed medicine**

The school/setting will not give your child medicine unless you complete and sign this form, and the school or setting has a policy that the staff can administer medicine.

Date for review to be initiated by	
Setting	
Name of child	
Date of birth	
Group/class/form	
Medical condition or illness	

**Medicine**

Name/type of medicine <i>(as described on the container)</i>	
Expiry date	
Dosage and method	
Timing	
Special precautions/other instructions	
Are there any side effects that the school/setting needs to know about?	
Self-administration – y/n	
Procedures to take in an emergency	

**NB: Medicines must be in the original container as dispensed by the pharmacy**

**Contact Details**

Name	
Daytime telephone no.	
Relationship to child	
Address	
I understand that I must deliver the medicine personally to	[agreed member of staff]

The above information is, to the best of my knowledge, accurate at the time of writing and I give consent to school/setting staff administering medicine in accordance with the school/setting policy. I will inform the school/setting immediately, in writing, if there is any change in dosage or frequency of the medication or if the medicine is stopped.

Supporting Children with Medical Needs Policy

Signature(s) \_\_\_\_\_

Date \_\_\_\_\_



Supporting Children with Medical Needs Policy

**Template C: parental agreement for setting to administer non-prescribed medicine – (Sundridge & Brasted) only**

The school/setting will not give your child medicine unless you complete and sign this form, and the school or setting has a policy that the staff can administer medicine.

Setting	
Name of child	
Date of birth	
Group/class/form	
Medical condition or illness	E.g. headache / cold / sore throat / similar

**Medicine**

Name/type of medicine <i>(as described on the container)</i>	Infant Calpol /Calpol 6+ /Infant Nurofen/ Piriteze
Dosage and method	As per the medicine's standard information
Timing	When needed – the school will call parents.

**NB: Medicines will be kept in the office for general use**

**Contact Details**

Name	
Daytime telephone no.	
Relationship to child	
Address	

I give consent to school staff administering medicine in accordance with the school policy. I understand that the school will call for verbal consent on the day and will not administer medicine without this consent.

Signature(s) \_\_\_\_\_

Date \_\_\_\_\_

Supporting Children with Medical Needs Policy

**Template D: record of medicine administered to an individual child**

Setting	
Name of child	
Date medicine provided by parent	
Group/class/form	
Quantity received	
Name and strength of medicine	
Expiry date	
Quantity returned	
Dose and frequency of medicine	

Staff signature \_\_\_\_\_

Signature of parent \_\_\_\_\_

Date			
Time given			
Dose given			
Name of member of staff			
Staff initials			

Date			
Time given			
Dose given			
Name of member of staff			
Staff initials			

**C: Record of medicine administered to an individual child (Continued)**

Date			
Time given			
Dose given			
Name of member of staff			
Staff initials			

Date			
Time given			
Dose given			
Name of member of staff			
Staff initials			

Date			
Time given			
Dose given			
Name of member of staff			
Staff initials			

Date			
Time given			
Dose given			
Name of member of staff			
Staff initials			



## Supporting Children with Medical Needs Policy

**Template F: staff training record – administration of medicines and/or medical procedures**

Setting	
Name	
Type of training received	
Date of training completed	
Training provided by	
Profession and title	

I confirm that [name of member of staff] has received the training detailed above and is competent to carry out any necessary treatment. I recommend that the training is updated [name of member of staff].

Trainer's signature \_\_\_\_\_

Date \_\_\_\_\_

**I confirm that I have received the training detailed above.**

Staff signature \_\_\_\_\_

Date \_\_\_\_\_

Suggested review date

Who is responsible for providing support in school

--

## Supporting Children with Medical Needs Policy

Describe medical needs and give details of child's symptoms, triggers, signs, treatments, facilities, equipment or devices, environmental issues etc

Name of medication, dose, method of administration, when to be taken, side effects, contra-indications, administered by/self-administered with/without supervision

Daily care requirements

Specific support for the pupil's educational, social and emotional needs

Arrangements for school visits/trips etc

Other information

Describe what constitutes an emergency, and the action to take if this occurs

Who is responsible in an emergency (*state if different for off-site activities*)?

Plan developed with

Supporting Children with Medical Needs Policy

Staff training needed/undertaken – who, what, when

Form copied to



**Template B: parental agreement for setting to administer prescribed medicine**

The school/setting will not give your child medicine unless you complete and sign this form, and the school or setting has a policy that the staff can administer medicine.

Date for review to be initiated by	
Setting	
Name of child	
Date of birth	
Group/class/form	
Medical condition or illness	

**Medicine**

Name/type of medicine <i>(as described on the container)</i>	
Expiry date	
Dosage and method	
Timing	
Special precautions/other instructions	
Are there any side effects that the school/setting needs to know about?	
Self-administration – y/n	
Procedures to take in an emergency	

**NB: Medicines must be in the original container as dispensed by the pharmacy**

**Contact Details**

Name	
Daytime telephone no.	
Relationship to child	
Address	
I understand that I must deliver the medicine personally to	[agreed member of staff]

The above information is, to the best of my knowledge, accurate at the time of writing and I give consent to school/setting staff administering medicine in accordance with the school/setting policy. I will inform the school/setting immediately, in writing, if there is any change in dosage or frequency of the medication or if the medicine is stopped.

Supporting Children with Medical Needs Policy

Signature(s) \_\_\_\_\_

Date \_\_\_\_\_

Supporting Children with Medical Needs Policy

**Template C: parental agreement for setting to administer non-prescribed medicine – (Sundridge & Brasted) only**

The school/setting will not give your child medicine unless you complete and sign this form, and the school or setting has a policy that the staff can administer medicine.

Setting	
Name of child	
Date of birth	
Group/class/form	
Medical condition or illness	E.g. headache / cold / sore throat / similar

**Medicine**

Name/type of medicine <i>(as described on the container)</i>	Infant Calpol /Calpol 6+ /Infant Nurofen/ Piriteze
Dosage and method	As per the medicine's standard information
Timing	When needed – the school will call parents.

**NB: Medicines will be kept in the office for general use**

**Contact Details**

Name	
Daytime telephone no.	
Relationship to child	
Address	

I give consent to school staff administering medicine in accordance with the school policy. I understand that the school will call for verbal consent on the day and will not administer medicine without this consent.

Signature(s) \_\_\_\_\_

Date \_\_\_\_\_

Supporting Children with Medical Needs Policy

**Template D: record of medicine administered to an individual child**

Setting	
Name of child	
Date medicine provided by parent	
Group/class/form	
Quantity received	
Name and strength of medicine	
Expiry date	
Quantity returned	
Dose and frequency of medicine	

Staff signature \_\_\_\_\_

Signature of parent \_\_\_\_\_

Date			
Time given			
Dose given			
Name of member of staff			
Staff initials			

Date			
Time given			
Dose given			
Name of member of staff			
Staff initials			

**C: Record of medicine administered to an individual child (Continued)**

Date			
Time given			
Dose given			
Name of member of staff			
Staff initials			

Date			
Time given			
Dose given			
Name of member of staff			
Staff initials			

Date			
Time given			
Dose given			
Name of member of staff			
Staff initials			

Date			
Time given			
Dose given			
Name of member of staff			
Staff initials			



**Template F: staff training record – administration of medicines and/or medical procedures**

Setting

--

Name

--

Type of training received

--

Date of training completed

--

Training provided by

--

Profession and title

--

I confirm that [name of member of staff] has received the training detailed above and is competent to carry out any necessary treatment. I recommend that the training is updated [name of member of staff].

Trainer's signature \_\_\_\_\_

Date \_\_\_\_\_

**I confirm that I have received the training detailed above.**

Staff signature \_\_\_\_\_

Date \_\_\_\_\_

Suggested review date